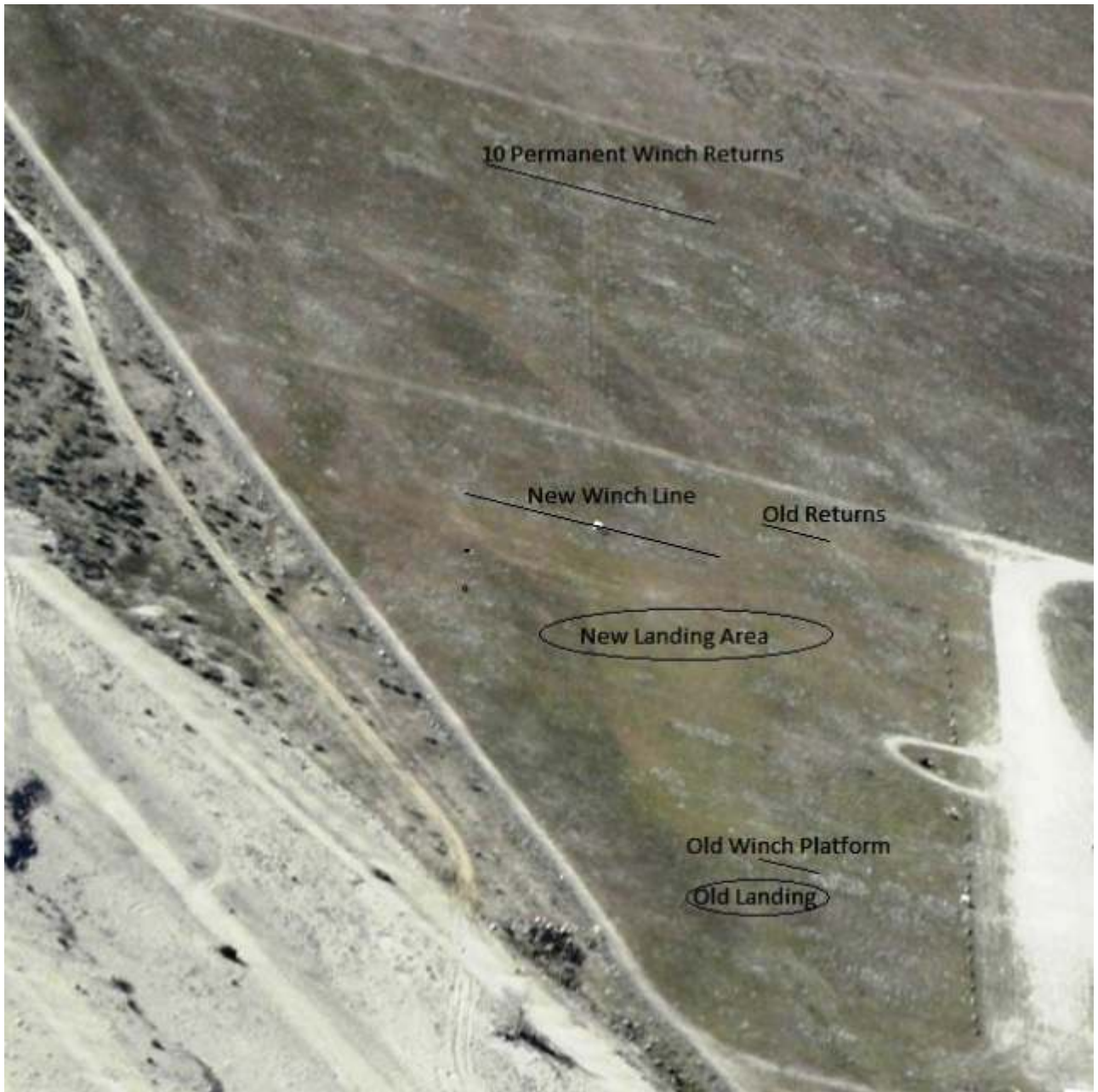


This is an Ariel shot of the VVRCF soaring field. Its 600ft exactly from Winch line to Returns. Winch line is 275ft wide. Landing flight line is 275ft wide. Landing area is 80 ft behind winch line. 10 winches and 10 spots. All 10 returns are permanent in concrete with adapters for all kinds of pulleys. Winches mount on plywood squares with spikes securing them to the ground. Parking is the same as before on the right. SC2 contest last year was in "OLD" area. JPEG is attached.  
Rick



VVRCF Soaring field with layout markings